

## How to use...

# SOCNET

Electronic Discussion Forum

SOCNET is a LISTSERV list. A LISTSERV list is essentially an automated mail forwarding system in which subscribers send mail to a central address and it is automatically rebroadcast to all other subscribers. The purpose of SOCNET is to allow network researchers worldwide to discuss research and professional issues, make announcements, and request help from each other. Membership in SOCNET costs nothing and is available to all members of INSNA.

### Joining SOCNET

---

To join SOCNET, send an email message to **listserv@nervm.nerdc.ufl.edu** that says the following in the first line of the body of the message: SUBSCRIBE SOCNET <your name>. For example:

**SUBSCRIBE SOCNET Steve Borgatti**

The LISTSERV software at NERVM will then add your name and email address to the list, and send you back a message confirming your membership. If you do not receive a confirmation message back, contact Steve Borgatti (Steve.Borgatti@scarolina.edu) or Russ Bernard (ufruss@nervm.nerdc.ufl.edu).

If you are at a BITNET site, there is an even easier way to sign up. Type the following at your CMS command prompt: TELL LISTSERV AT NERVM SUB SOCNET <your name>. For example:

**TELL LISTSERV AT NERVM SUB SOCNET Gery Ryan**

A minute or so later, you should receive a confirmation in response.

### Using SOCNET

---

Once you are subscriber, to send a message to all SOCNET subscribers, just send email to the internet address

**socnet@nervm.nerdc.ufl.edu**

or to the bitnet address **socnet@nervm**. Your message will automatically be broadcast to all SOCNET subscribers.

### Options

---

To permanently remove yourself from SOCNET, send a message to **listserv@nervm.nerdc.ufl.edu** with the following command in the body of the message:

**SIGNOFF SOCNET**

Important note: this message, like all LISTSERV commands, should be sent to the LISTSERV (address **listserv@nervm.nerdc.ufl.edu**) and not to SOCNET. If you send it to SOCNET, it will not sign you off, and everyone on SOCNET will get a message from you that says "SIGNOFF SOCNET".

To see who else is subscribed to SOCNET, send the REVIEW SOCNET command to the LISTSERV. You can have the list sorted by country, last name, node id and user id, if you like, by sending a command of the form REVIEW SOCNET (BY <fieldname> as follows:

**REVIEW SOCNET (BY COUNTRY)**  
**REVIEW SOCNET (BY NAME)**  
**REVIEW SOCNET (BY NODE)**

How to use...

# INSNALIB

Electronic Library

The purpose of INSNALIB is to enable network researchers to conveniently exchange data, software and articles. INSNALIB is a collection of computer files accessible via Web browsers like MOSAIC and NETSCAPE, or via anonymous **ftp**. Most computers that have email capability also have **ftp** capability. Ftp provides a way to log on to a remote computer and transfer files to or from that computer. An important feature of **ftp** is the ability to transfer files in **binary** format, which means that the transferring software does not try to translate the contents of the file into a format appropriate for the destination computer. Consequently, we can use a mainframe (or any other computer) as a storage area for all kinds of files including wordprocessing documents, spreadsheets, databases, etc.

## World Wide Web Access

Just point your browser to the following address: **<http://thecore.socy.scarolina.edu/insna.html>**

## Quick Example of Downloading a File From INSNALIB

Suppose we want to copy a file called **freemap.exe** from the library. To download this file, follow this procedure (what you type is in **boldface**, what the computer responds is in *italics*):

```
ftp thecore.socy.scarolina.edu           {start ftp and connect to INSNALIB computer}
USER: anonymous                         {when asked for user or account name, type "anonymous"}
>cd /pub                                 {change directory to the INSNALIB reading area where all files are kept}
>binary                                   {tell ftp that you are downloading a binary file rather than a simple text file}
>get freemap.exe                         {copy the "freemap.exe" file to your account}
>quit                                     {exit ftp}
```

As explained below, the file **freemap.exe** is a self-extracting zip file. This means that it is basically an archive that contains a number of separate files, including executable programs, source code, sample inputs and outputs, and documentation. To unpack the archive, make a new directory for the material (e.g., at your DOS prompt type **cd \mapstuff**), copy the archive to that directory (**copy freemap.exe \mapstuff**), change to that directory, (**cd \mapstuff**), and execute the file (type **freemap** at the DOS prompt). The result will be the creation of a series of files.

## Quick Example of Uploading a File to INSNALIB

Suppose we want to copy a file from your computer called **mypaper.wp** to the library, for submission to *CONNECTIONS*. Follow this procedure (what you type is in **boldface**, what the computer responds is in *italics*):

```

ftp thecore.socy.scarolina.edu           {start ftp and connect to INSNALIB computer}
USER: anonymous                          {when asked for user or account name, type "anonymous"}
>cd /incoming                            {change directory to the INSNALIB writing area}
>binary                                   {tell ftp that you are uploading a binary file rather than a simple text file}
>put mypaper.wp                           {copy the "mypaper.wp" file from your computer to the library}
>quit                                     {exit ftp}

```

Please note that since files are uploaded to the **/incoming** directory, but are downloaded from the **/pub** directory, any files that you upload are not immediately available for downloading to others. This is appropriate since many files that you may upload, like submissions to *CONNECTIONS*, are not meant to be made available to everyone. After uploading a file to the library, you should send a note to [insna@scarolina.edu](mailto:insna@scarolina.edu) to announce its arrival.

Also, do not include the **binary** keyword if you are uploading an ASCII text file.

## Structure of INSNALIB

Most of the files on INSNALIB are self-extracting zip files. This permits us to collect together a series of related files into one downloadable package and at the same time compresses the files so that they occupy less space. Self-extracting zip files are binary files that must be transferred using the **binary** option in **ftp**. If you omit the **binary** command, **ftp** will try to translate the file into ASCII characters, which will completely destroy it. Self-extracting archives are recognizable by the ".exe" extension.

A few other files are binary as well. Wordprocessing documents, such as those created by WordPerfect or Microsoft Word, are binary. So are spreadsheets and all executable programs. In fact, the only files that are not binary are text files, which in INSNALIB are normally identified by a ".txt" extension.

One key file in the library that is not binary is **contents.txt**, which provides a table of contents for all files in the library. **Contents.txt** gives the name of each file, a short description of its contents, and an indication of whether it is binary or not.

## Some Notes on FTP

Once you have established an **ftp** connection to a computer, you can get a listing of files in the current directory by typing "dir" at the **ftp** prompt, as in the following example:

```

ftp thecore.socy.scarolina.edu
USER: anonymous
>cd /pub
>dir

```

```

contents.txt      freemap.exe      stocentz.exe
ecosna.exe       sun94.exe
>get contents.txt
>quit

```

Note that in this example, we did not use the **binary** keyword since the file being downloaded was an ASCII text file.

When copying a file from the library, you can rename it at the same time by giving a second argument in the GET command. In the following example, the file **sun94.exe** is renamed **sunbelt.exe** as it is copied:

```

ftp thecore.socy.scarolina.edu
USER: anonymous
>cd /pub
>dir
contents.txt      freemap.exe      stocentz.exe
ecosna.exe       sun94.exe
>binary
>get sun94.exe sunbelt.exe
>quit

```

To copy a file to the library from your computer, use the **put** command instead of **get**. **IMPORTANT NOTE:** the **\pub** directory is write-protected. You cannot **put** any files there. Instead, you must change to the **\incoming** directory, as follows:

```

ftp thecore.socy.scarolina.edu
USER: anonymous
>cd /incoming
>binary
>put c:\ucinet\ucinet.exe ucinet.exe
>quit

```

Note the (optional) use of a full pathname to identify the source file.

Online help on using **ftp** may be obtained by typing **help** from the **ftp** command line to get a list of topics, followed by **help <topic>** to get help on a specific topic.

```

ftp thecore.socy.scarolina.edu
USER: anonymous
>help
.....list of topics appears here.....
>help dir
.....information on the dir command appears here.....
>quit

```

### WANTED:

Material for the social networks web page. For example:

- course syllabi
- software
- data
- material to supplement a journal article
- links to other web pages

Send to Mark Dawson at [dawsonm@sc.edu](mailto:dawsonm@sc.edu) or Computer Services Division, University of South Carolina, Columbia, SC 29208 USA

### Social Networks Web Page

To access the INSNA world wide page, just point your net browser to:

<http://thecore.socy.sc.edu/insna.html>

Place Your Ad Here!

### To Contact INSNA or CONNECTIONS

**Membership/subscriptions:** Contact Steve Borgatti at 617 552-0452 or [steve\\_borgatti@msn.com](mailto:steve_borgatti@msn.com)

**Manuscript submissions:** Call John Skvoretz (803 777-4968) or email him at [Skvoretz-John@sc.edu](mailto:Skvoretz-John@sc.edu), or email Katie Faust at [Katie-Faust@sc.edu](mailto:Katie-Faust@sc.edu).

**SOCNET/Web page:** Send email to Mark Dawson at [dawsonm@sc.edu](mailto:dawsonm@sc.edu).

### Outstanding Web Bookstore!

Russ Bernard recommends **Amazon.Com**, an outstanding bookstore you can access via the world wide web. It has a huge selection of books, it's searchable by keywords, and you can read and submit your own reviews. They can also email you when new books appear that match your search criteria. Catch it at:

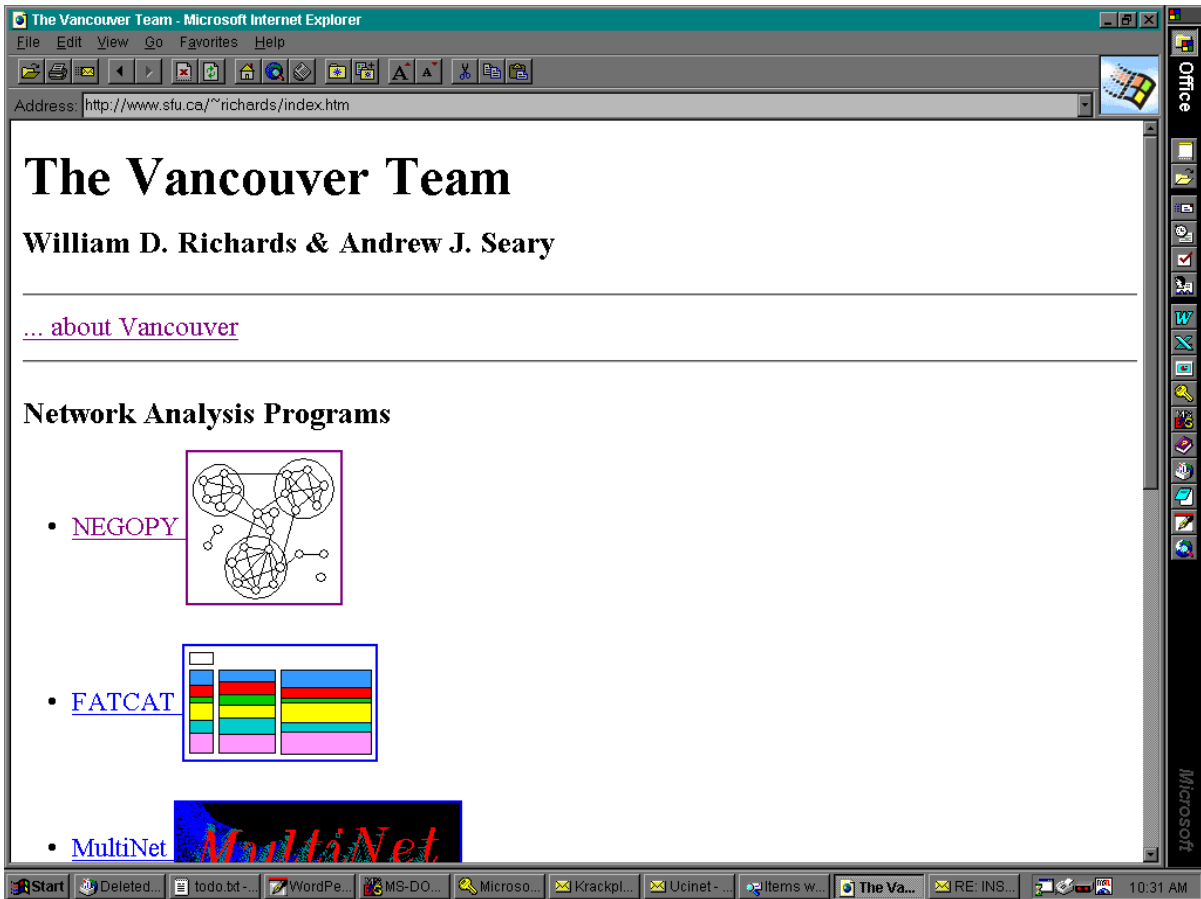
<http://www.amazon.com>

### Gateway to Network Analysis On the World Wide Web

Visit Lin Freeman's website

<http://eclectic.ss.uci.edu/~lin/lin.html>





Browser: Internet Explorer